

1. Introduction

If you want to build a report, you will have basically two models to take care of :

Data Model.
Paper Layout.

You can access these models either using the Object Navigator, or a wizard that is designed to walk you through the steps

A) Object Navigator

The object navigator is a hierarchy tree that let you access all report components including the data model and the layout model.

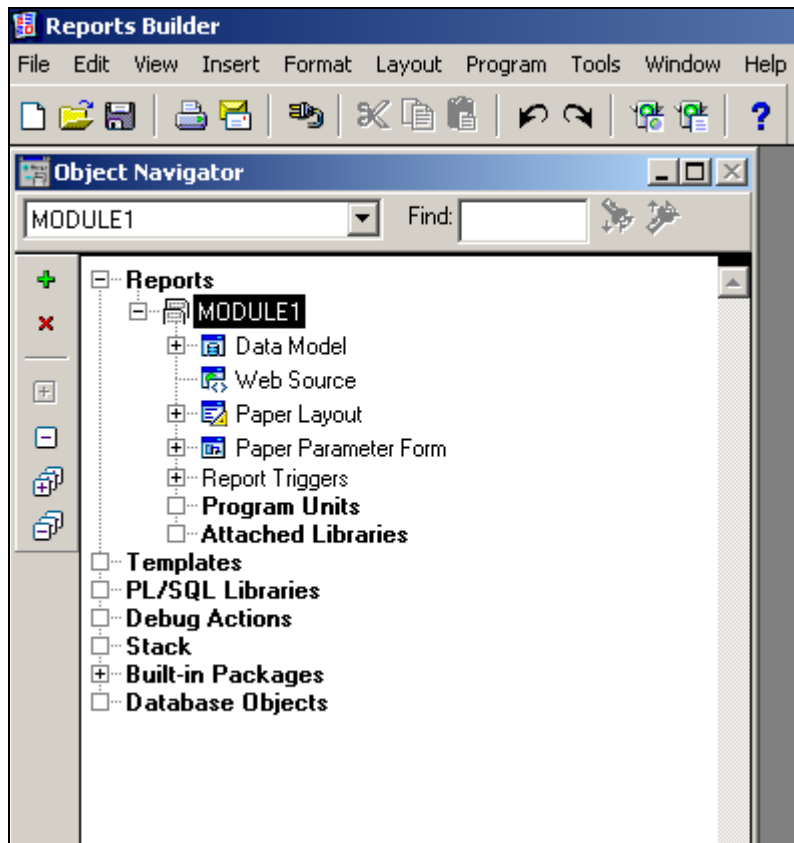


Figure 1 0-1 Object Navigator

If you expand the objects in the object navigator, you will be able to see the structure of the objects in the report.

The Data Model

The Data Model enables you to build the query through which you can retrieve the data using the standard SQL, also here you can build the groups which determine the hierarchy of the data appearing in your report, the groups are automatically build, when you specify the query, and initially each query has one group.

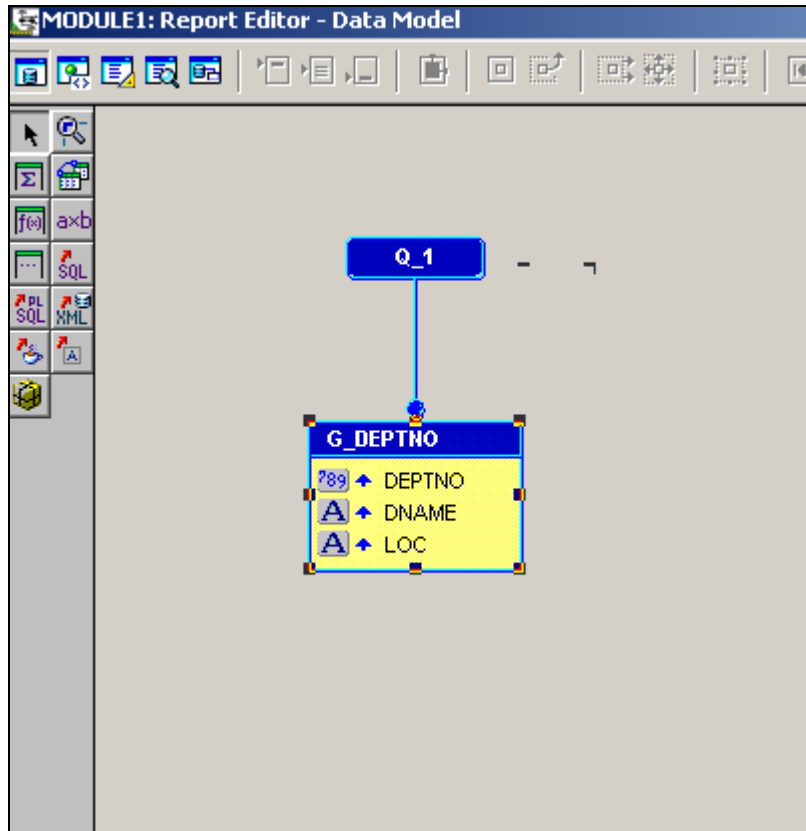


Figure 1 0-2 Data Model

The Paper Layout

The style of the report and the query itself defines the report output, there are several default layouts from Oracle reports; tabular, matrix, master/detail (group above or group left) ... etc. from which you can choose or you can build your own layout.

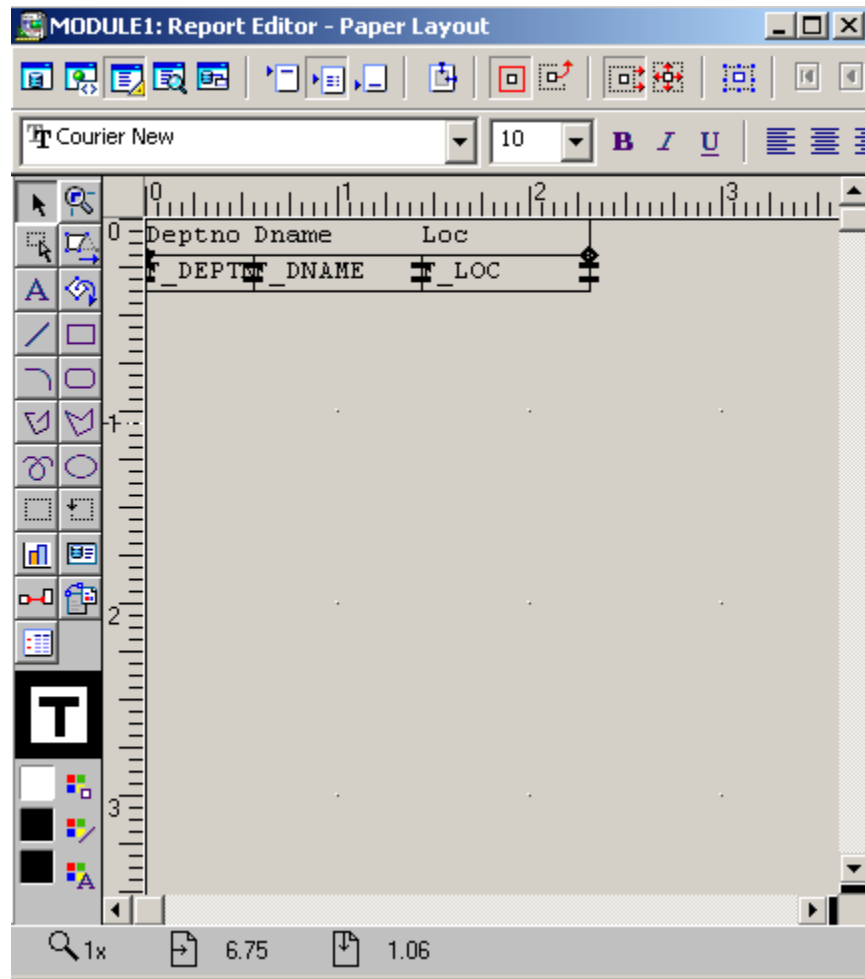


Figure 1 0-3 Paper Layout

- Frames, which surround some other objects and enables you to control these object simultaneously.
- Repeating frames, which represent rows of data retrieved from the database, and acts as placeholders for groups.
- Fields, which represent columns of the data retrieve and define the formatting for the columns displayed.

This is just a quick introduction and you will learn more about what has been discussed in this chapter in this book